

bradley's

art & frame

fall/winter 2007



you framed a what?

Margaret Burrow wanted to preserve this Bruno Artist Violin, c1800, lovingly played by her grandfather, Henry Ray, and her father, Carl Ray. Lucy designed the simple, but elegant frame to preserve the violin, bows and case. She created a name plate on the computer identifying the musicians. Margaret, we appreciate your confidence in Bradley's.

More ideas for framing violins



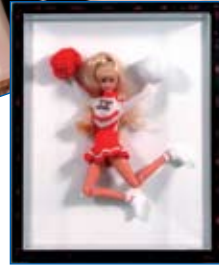
it's that time again...

The Holiday Shopping Card is accepted at Bradley's Art & Frame from October 25th through November 3rd. The American Cancer Society sells the Holiday Shopping Cards for a donation of \$60. You may use your card at selected merchants and receive a 20% discount during the HSC period. At Bradley's you will receive the discount on custom framing. All orders must be paid in advance.

Bradley's unconditionally guarantees our quality and your satisfaction!

follow up...

Many thanks to Nancy Thomas and Travis Vinson who gave us "Barbie" projects. For Nancy we framed 2 shadow boxes full of clothes, Barbie & Ken and a travel case from 1963. Travis gave us his special University of Georgia Cheerleader Barbie. Two donations have been sent to the Susan Komen Foundation in their names. Let Bradley's frame your Barbie and we'll send a donation in your name as well. (Lucy has another "Barbie Box" in the works... stay tuned.)



you framed a what?



Theresa Rimkus brought us her daughter Meredith's high school diploma, photo & invitation. To go with the elegant formal photo, Pat chose a gold cap frame with hand-carved corner designs. Black silk with a touch of red (to compliment Meredith's dress) completed this lovely keepsake.

Thanks, as always, Theresa.



Always impressive, Rice diplomas are large and generally printed on genuine sheepskin. Peggy Felder's daughter, Amanda, received her degree from Rice in Mechanical Engineering. Working online with Picture-It-First and e-mail, Lucy chose a brushed silver sloped frame with a black suede mat

and silver bead fillet. The sheepskin was properly mounted to preserve it indefinitely. An un-mounted sheepskin will dry-out, curl, ripple and can split. They must be adhered to a rag backing and safely spaced away from the glass. We selected Museum glass and used the matting for a spacer. Congratulations, we appreciate the opportunity to participate in this happy occasion.

needlepoint...

Jan Pakalka worked a long time on this "Father Christmas". The finished piece was 22x32. We used silver lame' fabric under the needlepoint so the sparkle would show through. The frame is a one-of-a-kind, closed corner frame with 22kt gold leaf bordering a custom green panel to match Father Christmas' robe. Gold stars and crescent moons give the finishing touches to this wonderful treasure!

Thanks, Jan.



Barbara Gessner stitched this awesome Texas Flag. She and Lucy chose an elegant rustic frame with key corners. To maintain the clarity of the colors, we used blue silk behind the blue "star" field with white and red silk behind their corresponding sections. The needlepoint was laced over rag board and finished with Museum Glass. Another great project. Thanks Barbara.

results are in for bradley's baby contest... Everyone who entered received a \$20 gift certificate, because NO ONE guessed us all correctly! The closest entry missed 4 matches. We really didn't mean to make it so difficult. We are happy to say everyone who entered did guess Megan (dog), Lily (cat), and Abigail (goose). Thanks for giving it a try!

picture-it-first......is visualization software that shows what your art will look like framed...before it is framed. Compare a light with a dark mat or a 1" wide frame with a 3" frame. It simplifies the selection of your *perfect* frame. Ask your sales/designer to show you Picture-it-First at Bradley's.

bradley's at memorial antiques & interiors......has closed. We'll let you know when we find another spot south of I-10...

meet... ...Tommye and Deborah - our new sales/designers. (Lauren will return during her school holiday)



Tommye Boyd, a retired SBISD principal, will be helping you with your framing projects on Monday, Tuesday and Wednesday. She brings a love of art and the joy of helping people.



Deborah Eddleman is here on Thursday, Friday & Saturday to design your perfect frame. On her other days she cares for a rambunctious 2 yr. old grandson. Deborah has a design and photography background and even *understands computers*.



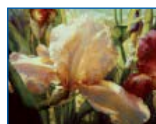
WOW! Houston artist, Nan Toole, uses antique Chinese windows as her canvas. As China modernizes, these windows are discarded. Each one is unique and suggests a theme or design to Nan.

Some, as the one pictured, are filled with photos; others painted canvas. What an enchanting addition to the decor of your home or office! Come in and see our selection of Nan's work now.

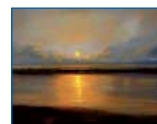
what's new......Art for you from Artaisance. The **art you want in the size you want** on either paper or canvas. **bradleys.artmystyle.com** will take you to a world of beautiful and exciting art. We can even offer a "Try Before You Buy" sample program. The \$6 cost for a small sample (around 5"x8") of the art you want to try is refundable with the purchase of the full-size art. You choose the art online. Your purchase will be delivered to Bradley's Art & Frame ready for that *perfect* frame. Canvas sizes are available up to 54x102; paper art up to 32x52. The actual dimensions are based on the proportion of the original piece of art. Not online? Come on in & we'll order for you!



Trouve #361
by
Vickie
Marie
Stolsen



Corrinne's Iris
by
Elizabeth
Horning



Perigee
by
Matthew
Hasty



2 Circles B
by
Jonathan
Adler

what is trendy, fun & retro? High gloss lacquer, bright colored bamboo!!! We have white, chocolate, baby blue, lime green, red, and yellow...all the colors you see on HGTV and in Architectural Digest.

a gift for you

\$15

Gift Certificate

Redeemable on Custom Framing
May be used once per month
through January 2008

to better serve you...

- **Pick-up, Deliver & Install** - We make "house calls"
- **Gift Certificates** - Always appreciated & *Never Expire!*
- **Gift Wrapping** - Complimentary on Bradley's purchases. (Angie's hand-made bows are a 'Texas Legend')
- **No Cut-Off for Holiday Framing** - The more time we have; the better we are - Earlier is BEST!
- **The Ultimate Customer Service**

:holiday hours:

Monday-Saturday - 10am-6pm • Saturday 9am-6pm beginning November 3rd
"Private Design Time" beginning November 3rd

:closed on these days:

Thanksgiving (11.22) - Christmas (12.25 & 12.26) - New Year's Eve (12.31 & 1.1.2008) - Inventory Monday (1.7.2008)

Reserve your **"Private Design Time"** before 10am with Pat or after 6pm with Lucy.

Together we'll create ideas for your perfect shadow box, or other project

Your **"Private Design Time"** is available weekdays. Please call **713.461.5695** to reserve your time.

As the Holidays approach, we want to wish you the very best and express our ongoing gratitude for your loyalty and appreciation of our efforts.

At the end of our 38th year, we at Bradley's Art & Frame, offer you a sincere **Thank You** and **Happy Holidays**

to you and your family.

The Bradley's and Staff

bradley's
art & frame

1306 Blalock Rd.
Houston, TX 77055
bradleysartandframe.com

PRESORTED STANDARD
US POSTAGE
PAID
HOUSTON TX
PERMIT NO 1210

