

# bradley's

art & frame

er 2005

## At Bradley's Picture it first!

See what your art  
will look like

....Before it is  
framed!!



*Go from this...*



*or this...*



*...To this*



*Go from this...*



*...To this*



*...To this*

**bradley's** art & frame *Unconditionally  
guarantees our quality and your satisfaction.*



Many pieces of art: photographs, watercolors, prints and oil paintings have come to us from hurricane devastated areas. Some are salvageable; sadly some are not. Please call us if you have questions or need assistance with flood damaged art.



**We want to share  
two recent restoration jobs with you.**



Leonie Walters recently brought us these two portraits of her Great, Great, Great Grandparents from the early 1800's. Not only were the paintings in need of repair, but the frames were severely damaged.

The oils were removed from their strainer bars, lined with new canvas, surface cleaned, touched up and varnished. The Grandfather's crest on the lower left was repainted accurately.

Bill stripped the frames, filled in where wood and/or plaster was missing, cast new leaves for the top decoration and re-finished both frames. The change is dramatic!



---

The lovely painting of two hunting dogs suffered severe damage amounting to one extremely large tear and several punctures. As you can see, our oil painting conservators, Ralph Dickerman and Wayne Floeck, not only salvaged the painting, but restored it to its original beautiful condition.

The painting was lined with new canvas bringing the torn edges together, surface cleaned, touched up and re-varnished. Amazing, isn't it?



# restoration



*A Note From Pat...* On the cover of our last newsletter, we featured a shadowbox from the Baseball All-Star game. My

last sentence read, "One of these days we'll get to make an Astros World Series shadow box". Well, bring them on. Our Astros are National League Champions and played in the 2005 World Series! I still like to say that - I've waited a long time to go to a World Series game. Bring your tickets, photos, caps, clippings - whatever you've got and let us create a one-of-a-kind memory of our Astros playing in the World Series. (Let's see if this works again) Next year we'll be World Champions...

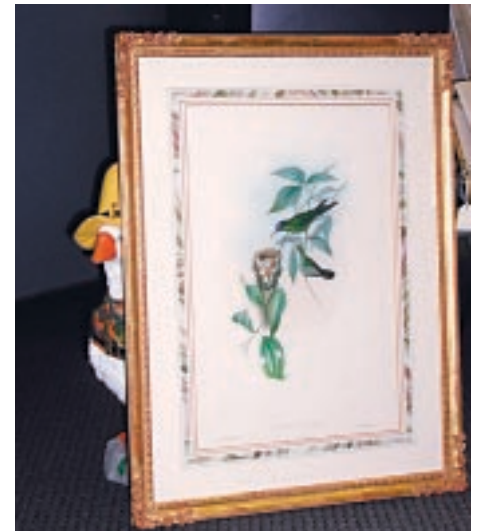
## world series shadow box

The Spring Branch-Memorial Sun ran a delightful article about our Bradley's baseball shrine and noted that I was born in Chicago and HAD BEEN a White Sox fan. Then Channel 11 came over and interviewed us, then Channel 2 showed up and finally Fox 26 put us on the pre-game show. Wow, what a wild time - now we're ready for Spring Training!



## where's abigail?

Find Abigail (the goose) somewhere in the gallery and collect your prize!!! Abigail has free Bradley's Gift Certificates, photo frames, prints, picture lights and more... but you have to find her to collect your prize. (One prize per family). This sounds easy, but she's a sneaky goose who wants to play hide and seek.



## bradley's braces for rita

We will do anything to protect your precious possessions.





## british bayonet

Have you ever heard of the "Iron Harvest"? It is an annual event in France. The local residents dig in their fields and turn up weapons from wars. The weapons are piled by the side of the road for the experts to disarm, if necessary. Joan Stough wanted to display this 1918 WWI British bayonet from the 2000 Iron Harvest. It is, of course, rusted and corroded, but easily recognizable. Bill designed some mounts so that the bayonet can be removed, handled and returned to the frame. Lucy found the perfect "crater gold" moulding which surrounds the "buckskin" colored suede background. An engraved brass plate identifies the bayonet as having been found in "The Somme". Thanks, Joan.

## a really cute caricature

Carol Hughes, a new customer, brought in this irrepressible caricature of her grandmother, Mary Mitchell, painted in 1922 by artist, E. J. Hurley. It was agreed that the portrait "captured her personality". Carol said that Mary was born in 1900 and that she had supported her family during the depression by selling off jewelry given to her by boyfriends. At one time Mary had been engaged to big band leader, Jack Teagarten, and was acquainted with Ginger Rogers. Lucy selected one of our new "large bead" mouldings using it as a liner inside a light pine frame.

The matting was rounded on the top to follow shape of the art design and to cover some torn and worn areas. The artist's signature on the back was exposed by using a mat and positioning the opening to show the autograph. An additional piece of glass protects the back. Museum Glass protects this precious family treasure. Thanks, Carol, it's been nice to get to know you and your Grandmother.



## archangel michael



Evan Glick recently purchased this colorful icon of "Archangel Michael". Pat's use of the red background and the gold frame with red rub combined to show the art at its very best. The icon was securely mounted to the backing board and is displayed without glass. You know, you can't have too many archangels. Thanks, Evan, you always have interesting projects.



*mystere*



*pattern of the orient*

## two needlepoints

Designed by Tony Minieri, these needlepoints were exquisitely stitched by Sally Norris and Denise Fischer.

Sally says she stitched "Mystere" without having seen it completed – it was a true mystery piece. The corners of the gold frame replicated the stitched corner pattern – there seemed to be no other frame choice. We laced the needlework over rag board, cotton batting, and a pale green silk. Then we used the same silk to cover a liner which suspended the Museum Glass away from the stitches.

Denise's "Pattern of the Orient" is framed in a gold basket-weave moulding that appears to continue the gold work stitching on the needlepoint. A "Maui" blue silk mat captures the palette of the stitched colors. Denise followed Lucy's recommendation to use Museum Glass to complete her framing.

Thanks to Denise and Sally, beautiful work!



## original art shopping bag

This is not just any shopping bag – it is an original limited edition piece of art. Regina Hicks wanted a unique presentation for the bag, which was to be given as a gift. She purchased it from an African American artist who chose paper bags as her “canvas”. The artist’s use of bags represents the historical significance of people who could not afford suitcases, carrying their belongings in paper bags. Lucy selected a primitive-style shadow box frame, finished in umber and black. The bag was mounted over a “toasted wheat” color rag board and protected with Conservation Clear Glass. Art is revealed in many forms. Thanks, Regina, for trusting Bradley’s



## new orleans super bowl

Here's a little tribute to our friends in New Orleans. Debra Chaney had saved her program, ticket, stuffed bear and medallion from the 2002 game. We shrink wrapped the program to protect it and stitched the other items in place over a “Jewel Blue” linen background. Pat chose a polished 12k white gold frame and a flat black extender to give us enough depth for the bear. Just a few items from a memorable event make a great gift or special treat for you. Thanks, Debra.



## arched-top frame for portrait

Kim Stewart's family portrait was to hang in an area that already had a built-in, recessed, arched shaped wall. Bradley's solution: make a frame with an arched top! To make the frame out of picture frame moulding required making 16 cuts on the miter saw at pre-determined angles. The arched leg of the frame was cut into 16 pieces, glued back together, joined to the other 3 sides and then touched up. Pam chose an ornate copper and gold frame with a beaded lip. The mats are “sepia-toned” linen over a lip of “mocha” brown suede. The portrait is protected from fading and reflections with Museum Glass. It's a beautiful family portrait, Kim. Thanks from Bradley's.

## wwi naval service

Karen Wylie's father, Richard C. Rhodes, Jr., served on the Destroyer Escort “James E. Craig” during WWII. We were privileged to frame the medals, patches, and photos that commemorate his service to our country in the US Navy. The frame Pat selected is yellow gold with a hand painted navy blue panel and decorative rosette corners. The items are mounted on top of “Flight Blue” suede and are protected by Museum Glass. Thank you, Karen, you honor us by choosing Bradley's.



...a what ??

# Great Gift Ideas...

## Beaded Jewelry by Virginia Oliver



Just look at these glittering designs of necklaces, earrings and bracelets. Every new piece Virginia brings us is more beautiful than the last. We have boxes and gift wrap ready for you – these are all one-of-a-kind.

## jeweled photo frames

See our many new dazzling styles. Perfect for those tiny vintage photos.



Let Virginia design the jewelry to go with your special holiday outfit! Call Bradley's for an appointment with the designer herself.



## texas critters ... are back

Along with the Armadillos, Horses, and Cows, we have the new painted State of Texas commemorating the University of Texas, and Texas A & M University. These are great for the patio or a game room. Bradley's has boxes and wrapping paper ready to help with your gift giving.



## because we care about you... and your photographs... and the gifts you give...

We have replaced ALL the glass in our inventory of Photo Frames to Conservation Clear Glass and all the backing boards to acid-free materials. In most instances, our elves will be happy to fit your photos in the new frames while you wait.

We have an exciting selection of frames this year – many new styles. See the expanded selection of Epoch Frames with the polished wooden backs that are perfect for a desk.

71"

41"

what's new — ??? — optima museum acrylic

We know you love Museum Glass. Now we can offer the same clarity, UV protection and practically no reflections in an acrylic. It is currently available up to 41" x 71". Optima is about half the weight of glass and looks wonderful. It is more resistant to scratching than the older acrylics.

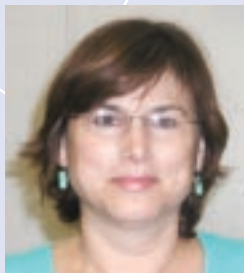


## kathy's korner

My Friends,

I'm very happy to announce that I am engaged to be married to Clif Nelson. We've known each other for over 5 years and will be married soon. Clif is currently learning the picture framing business so we will be able to continue offering you the highest quality and most creative custom picture framing designs for years to come.

Thank you for your good wishes and have a joyous Holiday Season. — *Kathy Bradley*



**bradley's** art & frame

## let's talk shadowboxes...

Hi Everyone,

I LOVE SHADOW BOXES...  
I LIVE TO DESIGN SHADOW BOXES...  
DESIGNING SHADOW BOXES MAKES ME VERY HAPPY. There is no more fun than to have a "sack full of stuff" and be able to turn it into a family heirloom that will tell a story for generations to come. It makes me so happy to achieve a perfect balance in a shadow box frame...and I love being happy! — *Pam Kelling*



"Help us make Pam happy – she's ready and waiting for you. If your shadow box is a holiday gift, sooner is better."



## lines from lucy

Did you know that Bradley's Art & Frame was one of the first custom frame shops in Houston to acquire a "WIZARD"? In 1994, Bill Bradley saw a computerized mat cutter demonstration and immediately understood the tremendous potential and value of this new technology to our business. We purchased one at that time and now have the latest design and software.

With the "WIZARD", Steve Gase, our "WIZARD MASTER" can cut practically an unlimited array of designs out of mat board. He can emboss designs and shapes in fabric and cut designs onto painted glass mats. We also have the ability to take almost any shape of your choosing, including names and logos, and incorporate them into your framing job.

## designs can be simple or intricate and complex like these:

There are designs for every season, holiday, occupation, sport and vacation. There are patterns, shapes, borders, decorations, silhouettes, symbols, insignias, States, countries, team logos and badges. There are an infinite number of cutouts of animals, musical instruments, children's motifs and frill for all occasions.

Let us embellish your next custom framing job or just put a special shaped opening around that important photo. Our designers will come up with creative ways to use these ideas in your one-of-a-kind custom framing. — *Lucy Quay*



**bradley's** art & frame

**15<sup>00</sup> JAN - FEB**  
**GIFT CERTIFICATE**  
**Custom Framing Only**

1306 Blalock at Westview • 713-461-5695  
www.bradleyartandframe.com

Not transferable • Not redeemable for cash • Only one gift certificate per invoice  
Valid for the months of January and February, 2006

**bradley's** art & frame

**15<sup>00</sup> DEC - JAN**  
**GIFT CERTIFICATE**  
**Custom Framing Only**

1306 Blalock at Westview • 713-461-5695  
www.bradleyartandframe.com

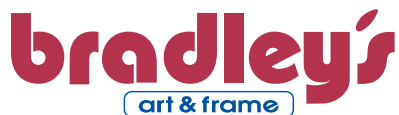
Not transferable • Not redeemable for cash • Only one gift certificate per invoice  
Valid for the months of December and January, 2005

**bradley's** art & frame

**15<sup>00</sup> NOV - DEC**  
**GIFT CERTIFICATE**  
**Custom Framing Only**

1306 Blalock at Westview • 713-461-5695  
www.bradleyartandframe.com

Not transferable • Not redeemable for cash • Only one gift certificate per invoice  
Valid for the months of November and December, 2005



1306 Blalock at Westview  
Houston, Texas 77055  
713-461-5695  
www.bradleyartandframe.com

ADDRESS SERVICE REQUESTED

PRSRT STD  
U.S. Postage  
**PAID**  
Houston, Tx  
Permit 600



## bradley's goodies... ✓✓✓✓✓

- ✓ Complimentary Gift Wrapping (the Elves have carefully selected the paper and ribbon)
- ✓ All Photo Frames sold at Bradley's Art & Frame contain Conservation Clear Glass and Acid-Free Backing Board
- ✓ Gift Certificates: Always appreciated and valid until they are redeemed. The value is NEVER reduced.
- ✓ Convenient Lay-a-way: We never impose a "cut-off" date for framing...but "earlier is best"!!!
- ✓ Complimentary home-baked cookies and wassail on Saturdays in December

## Holiday Greetings



Clockwise from lower right - Nicki Dog, Clif, Kathy, Megan (Shop Dog in Training), Bill, Angie, Pam, Aaron, Lucy, Steve, Lisa and Pat. (Lily, the shop cat, still chooses not to be photographed with dogs).



From our  
Bradley's family  
to yours,  
we wish you a  
peaceful  
&  
joyous  
Holiday Season...  
Good friends,  
good families,  
good food,  
good fun and  
good cheer.

## holiday calender

Nov. 28th  
thru Dec. 23rd.....(Evenings by appointment)  
Open 9:00 a.m. - 6:00 p.m.

December 24th  
Open.....9:00 a.m. - 4:00 p.m.

Dec. 25th  
thru Dec. 27th.....Closed for Christmas Holiday

Dec 28th  
thru Dec. 30th.....Open 10:00 a.m. - 6:00 p.m.

December 31st  
Open.....10:00 a.m. - 4:00 p.m.

January 2 2006  
Monday.....Closed for Inventory

**bradley's** art & frame



**NOV - DEC**  
GIFT CERTIFICATE

Name: \_\_\_\_\_  
AS SHOWN ON MAILING LABEL

**bradley's** art & frame



**DEC - JAN**  
GIFT CERTIFICATE

Name: \_\_\_\_\_  
AS SHOWN ON MAILING LABEL

**bradley's** art & frame



**JAN - FEB**  
GIFT CERTIFICATE

Name: \_\_\_\_\_  
AS SHOWN ON MAILING LABEL